

City of Greater Newcastle

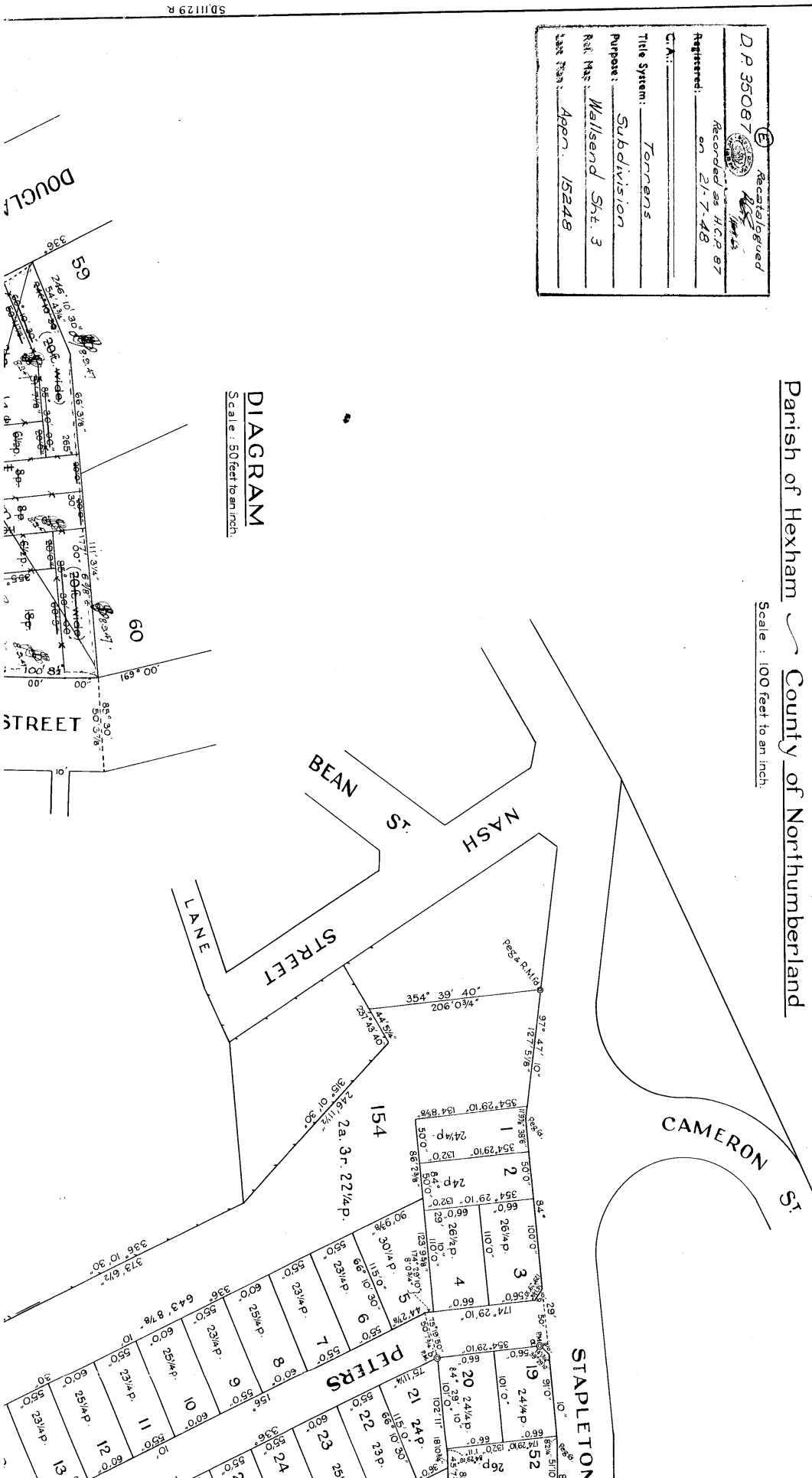
0742832 21/10/47

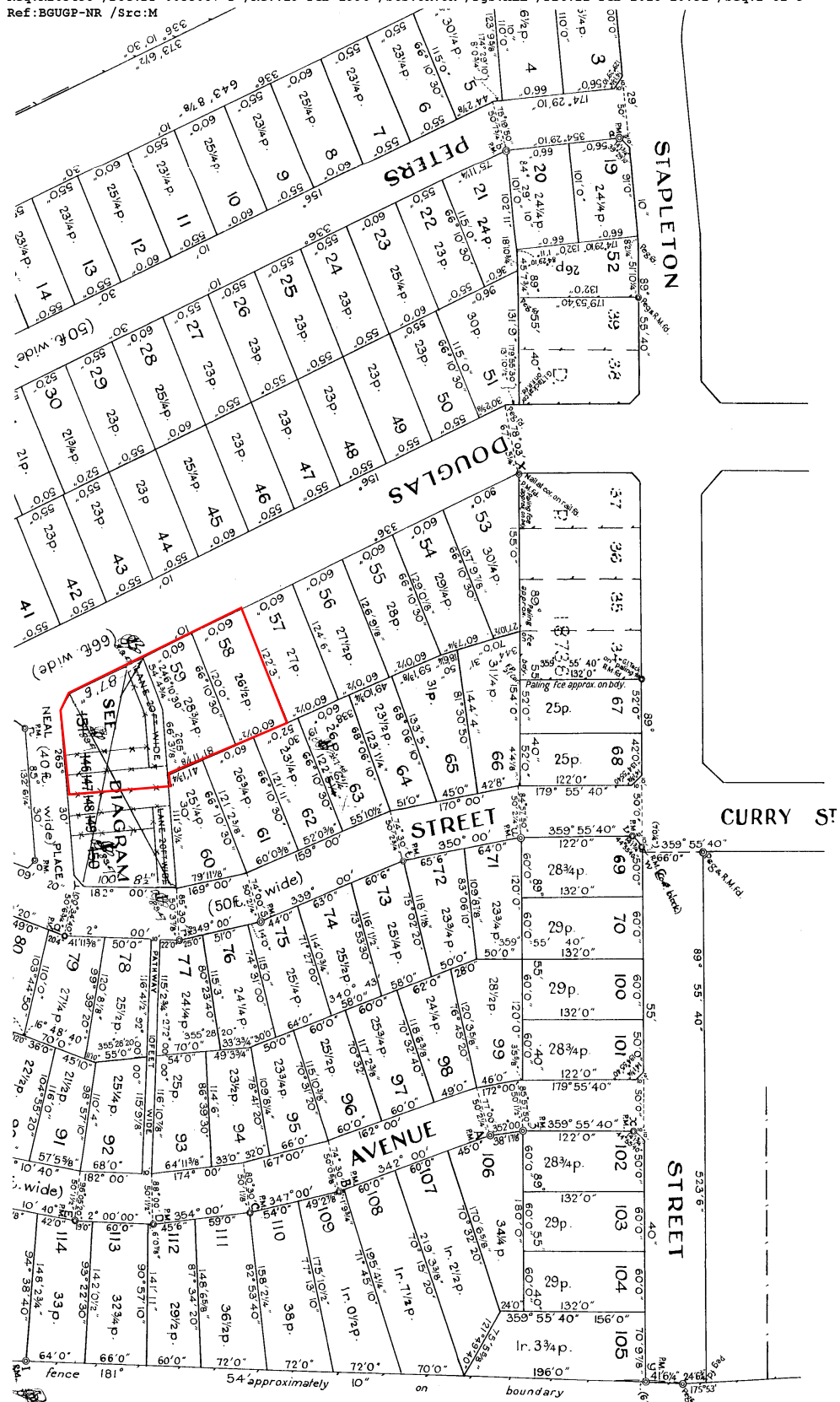
Registered:	Recorded as H.C.P. 87
on	21.7.48
C.A.:	
Title System:	Torrens
Purpose:	Subdivision
Ref. Map:	Wallsend Sht. 3
Lot Area:	15248

# PLAN

of subdivision of part of portion 14 resumed for housing purposes  
by notification in Gazette of 5th May, 1944  
Parish of Hexham County of Northumberland

Scale : 100 Feet to an inch.



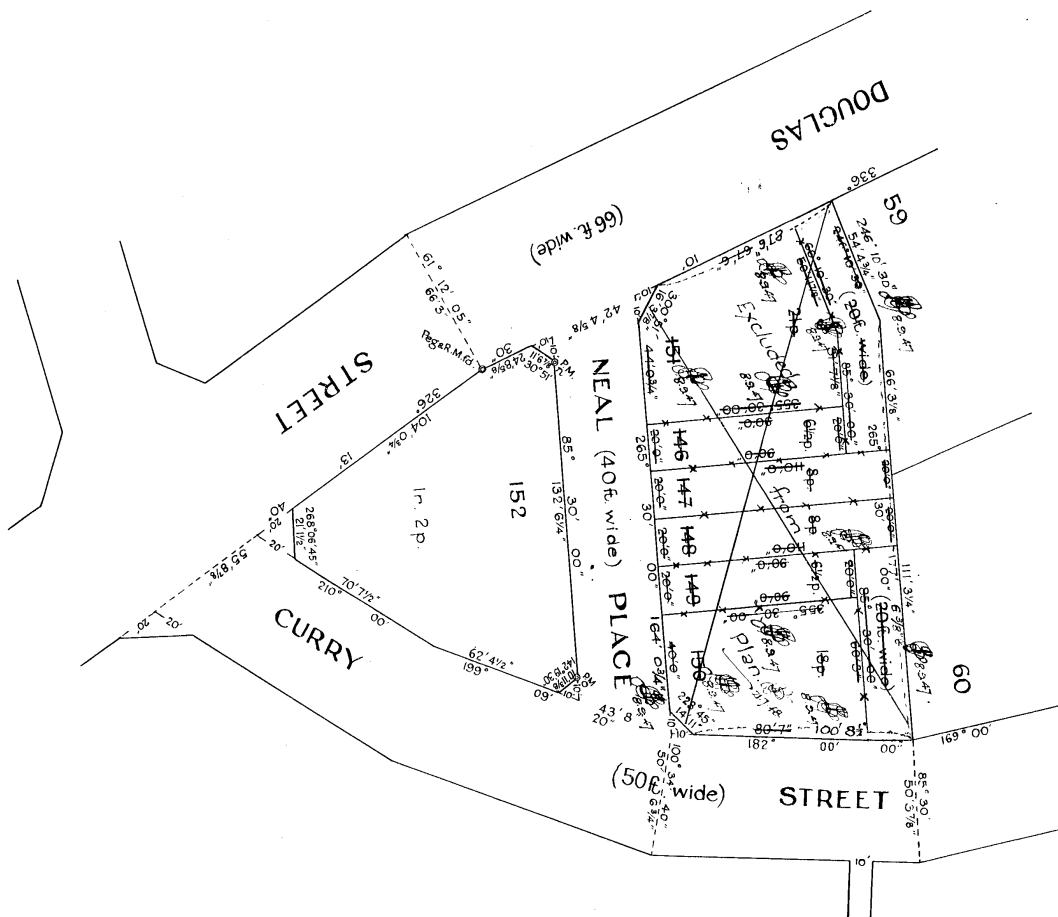


D.P. 35087 (E)

100007

Datum line of Azimuth X Y  
Permanent. Marks are conc

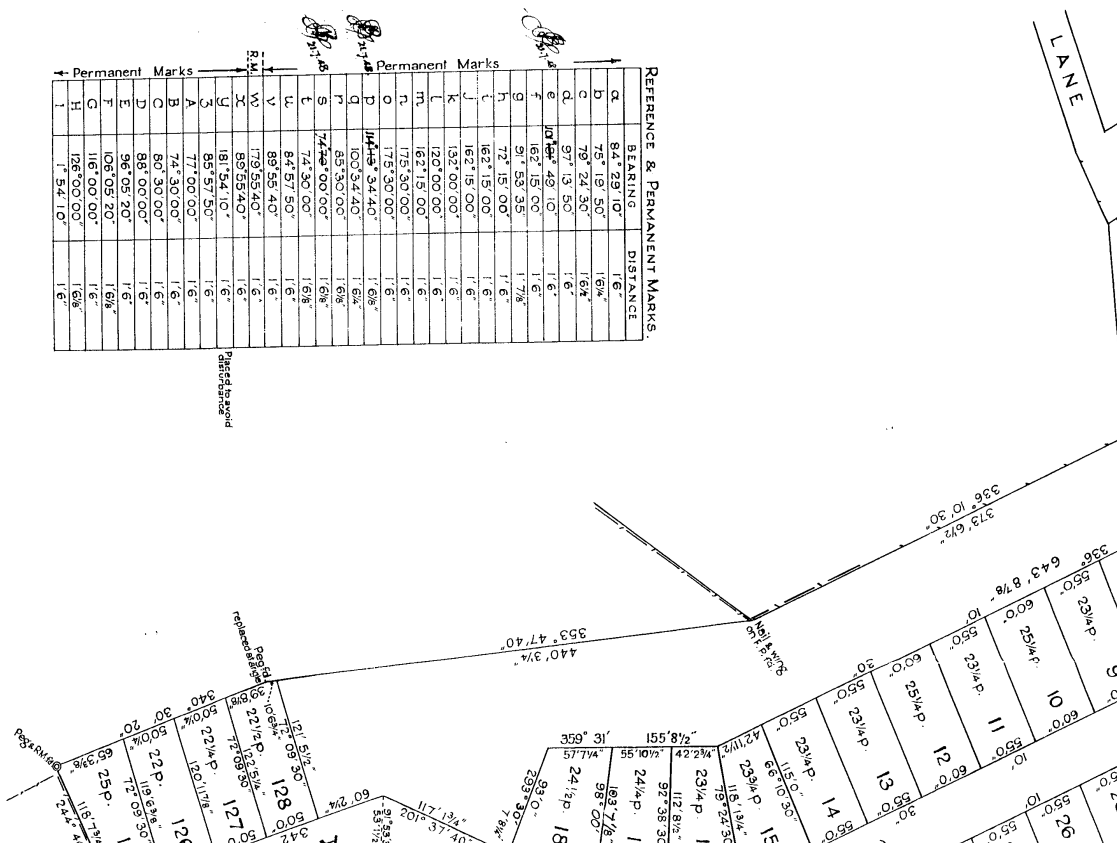
D.P. 35087 (E)



Scale : 50 feet to an inch

REFERENCE & PERMANENT MARKS		
BEARING	DISTANCE	
a	84° 29' 10"	16'
b	75° 15' 50"	16'
c	79° 24' 30"	16'
d	97° 13' 53"	16'
e	102° 49' 10"	16'
f	162° 15' 00"	16'
g	91° 55' 35"	17 1/2'
h	72° 15' 00"	16'
i	162° 15' 00"	16'
j	162° 15' 00"	16'
k	135° 00' 00"	16'
l	120° 00' 00"	16'
m	162° 15' 00"	16'
n	175° 30' 00"	16'
o	175° 30' 00"	16'
p	114° 34' 40"	16'
q	100° 34' 40"	16'
r	85° 30' 05"	16'
s	74° 30' 00"	16'
t	74° 30' 00"	16'
u	84° 57' 50"	16'
v	88° 55' 40"	16'
w	175° 55' 40"	16'
x	88° 55' 40"	16'
y	181° 54' 10"	16'
z	85° 57' 50"	16'
A	77° 00' 00"	16'
B	77° 30' 00"	16'
C	88° 50' 00"	16'
D	88° 50' 00"	16'
E	96° 05' 20"	16'
F	96° 05' 20"	16'
G	106° 05' 20"	16'
H	106° 05' 20"	16'
I	126° 00' 00"	16'
J	134° 10'	16'

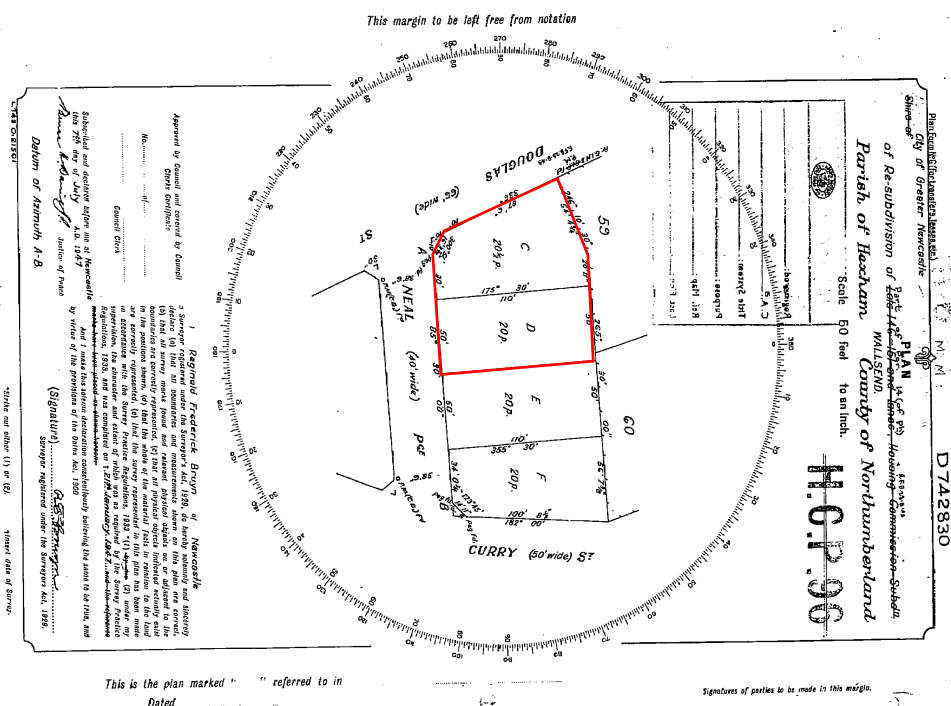
**Placed to avoid disturbance**





CONVERSION TABLE ADDED IN REGISTER GENERAL'S DEPARTMENT		
FEET INCHES	METRES	
0 1/2	0.013	
7 1/4	0.188	
6 1/8	0.157	
6 1/4	0.163	
6 1/2	0.168	
6 3/4	0.173	
6 7/8	0.178	
6 5/8	0.173	
6 1/2	0.168	
6 1/4	0.163	
6 3/8	0.158	
6 1/8	0.153	
6 1/16	0.148	
5 7/8	0.143	
5 3/4	0.138	
5 1/2	0.133	
5 1/4	0.128	
5 1/8	0.123	
5	0.118	
4 7/8	0.113	
4 3/4	0.108	
4 1/2	0.103	
4 1/4	0.098	
4 3/8	0.093	
4 1/8	0.088	
4	0.083	
3 7/8	0.078	
3 3/4	0.073	
3 1/2	0.068	
3 1/4	0.063	
3 3/8	0.058	
3 1/8	0.053	
3	0.048	
2 7/8	0.043	
2 3/4	0.038	
2 1/2	0.033	
2 1/4	0.028	
2 3/8	0.023	
2 1/8	0.018	
2	0.013	
1 7/8	0.008	
1 3/4	0.003	
1 1/2	0.000	
1 1/4	-0.005	
1 3/8	-0.010	
1 1/8	-0.015	
1	-0.020	
3/4	-0.025	
3/8	-0.030	
1/2	-0.035	
1/4	-0.040	
1/8	-0.045	
0	-0.050	

CONVERSION TABLE ADDED IN REGISTER GENERAL'S DEPARTMENT		
DP 35067	CONTINUED	
FEET INCHES		METRES
36 6 3/4		11.735
36 10 7/8		11.830
36 12 1/2		11.925
36 14 1/8		12.020
36 16 1/4		12.115
36 18 1/8		12.210
36 20 1/4		12.305
36 22 1/2		12.400
36 24 3/4		12.495
36 26 7/8		12.590
36 29 1/8		12.685
36 31 3/4		12.780
36 34 1/8		12.875
36 36 3/4		12.970
36 39 1/8		13.065
36 41 3/4		13.160
36 44 1/8		13.255
36 46 3/4		13.350
36 49 1/8		13.445
36 51 3/4		13.540
36 54 1/8		13.635
36 56 3/4		13.730
36 59 1/8		13.825
36 61 3/4		13.920
36 64 1/8		14.015
36 66 3/4		14.110
36 69 1/8		14.205
36 71 3/4		14.300
36 74 1/8		14.395
36 76 3/4		14.490
36 79 1/8		14.585
36 81 3/4		14.680
36 84 1/8		14.775
36 86 3/4		14.870
36 89 1/8		14.965
36 91 3/4		15.060
36 94 1/8		15.155
36 96 3/4		15.250
36 99 1/8		15.345
36 101 3/4		15.440
36 104 1/8		15.535
36 106 3/4		15.630
36 109 1/8		15.725
36 111 3/4		15.820
36 114 1/8		15.915
36 116 3/4		16.010
36 119 1/8		16.105
36 121 3/4		16.200
36 124 1/8		16.295
36 126 3/4		16.390
36 129 1/8		16.485
36 131 3/4		16.580
36 134 1/8		16.675
36 136 3/4		16.770
36 139 1/8		16.865
36 141 3/4		16.960
36 144 1/8		17.055
36 146 3/4		17.150
36 149 1/8		17.245
36 151 3/4		17.340
36 154 1/8		17.435
36 156 3/4		17.530
36 159 1/8		17.625
36 161 3/4		17.720
36 164 1/8		17.815
36 166 3/4		17.910
36 169 1/8		18.005
36 171 3/4		18.100
36 174 1/8		18.195
36 176 3/4		18.290
36 179 1/8		18.385
36 181 3/4		18.480
36 184 1/8		18.575
36 186 3/4		18.670
36 189 1/8		18.765
36 191 3/4		18.860
36 194 1/8		18.955
36 196 3/4		19.050
36 199 1/8		19.145
36 201 3/4		19.240
36 204 1/8		19.335
36 206 3/4		19.430
36 209 1/8		19.525
36 211 3/4		19.620
36 214 1/8		19.715
36 216 3/4		19.810
36 219 1/8		19.905
36 221 3/4		20.000
36 224 1/8		20.095
36 226 3/4		20.190
36 229 1/8		20.285
36 231 3/4		20.380
36 234 1/8		20.475
36 236 3/4		20.570
36 239 1/8		20.665
36 241 3/4		20.760
36 244 1/8		20.855
36 246 3/4		20.950
36 249 1/8		21.045
36 251 3/4		21.140
36 254 1/8		21.235
36 256 3/4		21.330
36 259 1/8		21.425
36 261 3/4		21.520
36 264 1/8		21.615
36 266 3/4		21.710
36 269 1/8		21.805
36 271 3/4		21.900
36 274 1/8		22.000
36 276 3/4		22.095
36 279 1/8		22.190
36 281 3/4		22.285
36 284 1/8		22.380
36 286 3/4		22.475
36 289 1/8		22.570
36 291 3/4		22.665
36 294 1/8		22.760
36 296 3/4		22.855
36 299 1/8		22.950
36 301 3/4		23.045
36 304 1/8		23.140
36 306 3/4		23.235
36 309 1/8		23.330
36 311 3/4		23.425
36 314 1/8		23.520
36 316 3/4		23.615
36 319 1/8		23.710
36 321 3/4		23.805
36 324 1/8		23.900
36 326 3/4		24.000
36 329 1/8		24.095
36 331 3/4		24.190
36 334 1/8		24.285
36 336 3/4		24.380
36 339 1/8		24.475
36 341 3/4		24.570
36 344 1/8		24.665
36 346 3/4		24.760
36 349 1/8		24.855
36 351 3/4		24.950
36 354 1/8		25.045
36 356 3/4		25.140
36 359 1/8		25.235
36 361 3/4		25.330
36 364 1/8		25.425
36 366 3/4		25.520
36 369 1/8		25.615
36 371 3/4		25.710
36 374 1/8		25.805
36 376 3/4		25.900
36 379 1/8		26.000
36 381 3/4		26.095
36 384 1/8		26.190
36 386 3/4		26.285
36 389 1/8		26.380
36 391 3/4		26.475
36 394 1/8		26.570
36 396 3/4		26.665
36 399 1/8		26.760
36 401 3/4		26.855
36 404 1/8		26.950
36 406 3/4		27.045
36 409 1/8		27.140
36 411 3/4		27.235
36 414 1/8		27.330
36 416 3/4		27.425
36 419 1/8		27.520
36 421 3/4		27.615
36 424 1/8		27.710
36 426 3/4		27.805
36 429 1/8		27.900
36 431 3/4		28.000
36 434 1/8		28.095
36 436 3/4		28.190
36 439 1/8		28.285
36 441 3/4		28.380
36 444 1/8		28.475
36 446 3/4		28.570
36 449 1/8		28.665
36 451 3/4		28.760
36 454 1/8		28.855
36 456 3/4		28.950
36 459 1/8		29.045
36 461 3/4		29.140
36 464 1/8		29.235
36 466 3/4		29.330
36 469 1/8		29.425
36 471 3/4		29.520
36 474 1/8		29.615
36 476 3/4		29.710
36 479 1/8		29.805
36 481 3/4		29.900
36 484 1/8		30.000
36 486 3/4		30.095
36 489 1/8		30.190
36 491 3/4		30.285
36 494 1/8		30.380
36 496 3/4		30.475
36 499 1/8		30.570
36 501 3/4		30.665
36 504 1/8		30.760
36 506 3/4		30.855
36 509 1/8		30.950
36 511 3/4		31.045
36 514 1/8		31.140
36 516 3/4		31.235
36 519 1/8		31.330
36 521 3/4		31.425
36 524 1/8		31.520
36 526 3/4		31.615
36 529 1/8		31.710
36 531 3/4		31.805
36 534 1/8		31.900
36 536 3/4		32.000
36 539 1/8		32.095
36 541 3/4		32.190
36 544 1/8		32.285
36 546 3/4		32.380
36 549 1/8		32.475
36 551 3/4		32.570
36 554 1/8		32.665
36 556 3/4		32.760
36 559 1/8		32.855
36 561 3/4		32.950
36 564 1/8		33.045
36 566 3/4		33.140
36 569 1/8		33.235
36 571 3/4		33.330
36 574 1/8		33.425
36 576 3/4		33.520
36 579 1/8		33.615
36 581 3/4		33.710
36 584 1/8		33.805
36 586 3/4		33.900
36 589 1/8		34.000
36 591 3/4		34.095
36 594 1/8		34.190
36 596 3/4		34.285
36 599 1/8		34.380
36 601 3/4		34.475
36 604 1/8		34.570
36 606 3/4		34.665
36 609 1/8		34.760
36 611 3/4		34.855
36 614 1/8		34.950
36 616 3/4		35.045
36 619 1/8		35.140
36 621 3/4		35.235
36 624 1/8		35.330
36 626 3/4		35.425
36 629 1/8		35.520
36 631 3/4		35.615
36 634 1/8		35.710
36 636 3/4		35.805
36 639 1/8		35.900
36 641 3/4		36.000
36 644 1/8		36.095
36 646 3/4		36.190
36 649 1/8		36.285
36 651 3/4		36.380
36 654 1/8		36.475
36 656 3/4		36.570
36 659 1/8		36.665
36 661 3/4		36.760
36 664 1/8		36.855
36 666 3/4		36.950
36 669 1/8		37.045
36 671 3/4		37.140
36 674 1/8		37.235
36 676 3/4		37.330
36 679 1/8		37.425
36 681 3/4		37.520
36 684 1/8		37.615
36 686 3/4		37.710
36 689 1/8		37.805
36 691 3/4		37.900
36 694 1/8		38.000
36 696 3/4		38.095
36 699 1/8		38.190
36 701 3/4		38.285
36 704 1/8		38.380
36 706 3/4		38.475
36 709 1/8		38.570
36 711 3/4		38.665
36 714 1/8		38.760
36 716 3/4		38.855
36 719 1/8		38.950
36 721 3/4		39.045
36 724 1/8		39.140
36 726 3/4		39.235
36 729 1/8		39.330
36 731 3/4		39.425
36 734 1/8		39.520
36 736 3/4		39.615
36 739 1/8		39.710
36 741 3/4		39.805
36 744 1/8		39.900
36 746 3/4		40.000
36 749 1/8		40.095
36 751 3/4		40.190
36 754 1/8		40.285
36 756 3/4		40.380
36 759 1/8		40.475
36 761 3/4		40.570
36 764 1/8		40.665
36 766 3/4		40.760
36 769 1/8		40.855
36 771 3/4		40.950
36 774 1/8		41.045
36 776 3/4		41.140
36 779 1/8		41.235
36 781 3/4		41.330
36 784 1/8		41.425
36 786 3/4		41.520
36 789 1/8		41.615
36 791 3/4		41.710
36 794 1/8		41.805
36 796 3/4		41.900
36 799 1/8		42.000
36 801 3/4		42.095
36 804 1/8		42.190
36 806 3/4		42.285
36 809 1/8		42.380
36 811 3/4		42.475
36 814 1/8		42.570
36 816 3/4		42.665
36 819 1/8		42.760
36 821 3/4		42.855
36 824 1/8		42.950
36 826 3/4		43.045
36 829 1/8		43.140
36 831 3/4		43.235
36 834 1/8		43.330
36 836 3/4		43.425
36 839 1/8		43.520
36 841 3/4		43.615
36 844 1/8		43.710
36 846 3/4		43.805
36 849 1/8		43.900
36 851 3/4		44.000
36 854 1/8		44.095
36 856 3/4		44.190
36 859 1/8		44.285
36 861 3/4		44.380
36 864 1/8		44.475
36 866 3/4		44.570
36 869 1/8		44.665
36 871 3/4		44.760
36 874 1/8		44.855
36 876 3/4		44.950
36 879 1/8		45.045
36 881 3/4		45.140
36 884 1/8		45.235
36 886 3/4		45.330
36 889 1/8		45.425
36 891 3/4		45.520
36 894 1/8		45.615
36 896 3/4		45.710
36 899 1/8		45.805
36 901 3/4		45.900
36 904 1/8		46.000
36 906 3/4		46.095
36 909 1/8		46.190



This is the plan marked " " referred to in  
Dated \_\_\_\_\_

Signatures of parties to be made in this margin.

[illegible]

~~HCP-96~~ D.P. 35096



FOLIO: 58/35087

-----

SEARCH DATE	TIME	EDITION NO	DATE
-----	----	-----	----
5/6/2024	9:57 AM	-	-

VOL 13432 FOL 44 IS THE CURRENT CERTIFICATE OF TITLE

LAND

----

LOT 58 IN DEPOSITED PLAN 35087

LOCAL GOVERNMENT AREA NEWCASTLE

PARISH OF HEXHAM COUNTY OF NORTHUMBERLAND

TITLE DIAGRAM DP35087

FIRST SCHEDULE

-----

NEW SOUTH WALES LAND AND HOUSING CORPORATION

SECOND SCHEDULE (1 NOTIFICATION)

-----

1 LAND EXCLUDES MINERALS (S.141 PUBLIC WORKS ACT, 1912)

NOTATIONS

-----

UNREGISTERED DEALINGS: NIL

\*\*\* END OF SEARCH \*\*\*



FOLIO: 59/35087

-----

SEARCH DATE	TIME	EDITION NO	DATE
-----	----	-----	----
5/6/2024	9:57 AM	1	4/6/2024

LAND

----

LOT 59 IN DEPOSITED PLAN 35087

LOCAL GOVERNMENT AREA NEWCASTLE

PARISH OF HEXHAM COUNTY OF NORTHUMBERLAND

TITLE DIAGRAM DP35087

FIRST SCHEDULE

-----

ABORIGINAL HOUSING OFFICE

(T AU79602)

SECOND SCHEDULE (1 NOTIFICATION)

-----

1 LAND EXCLUDES MINERALS (S.141 PUBLIC WORKS ACT, 1912)

NOTATIONS

-----

UNREGISTERED DEALINGS: NIL

\*\*\* END OF SEARCH \*\*\*





FOLIO: C/35096

-----

SEARCH DATE	TIME	EDITION NO	DATE
-----	----	-----	----
5/6/2024	9:57 AM	-	-

VOL 13432 FOL 118 IS THE CURRENT CERTIFICATE OF TITLE

LAND

----

LOT C IN DEPOSITED PLAN 35096

LOCAL GOVERNMENT AREA NEWCASTLE

PARISH OF HEXHAM COUNTY OF NORTHUMBERLAND

TITLE DIAGRAM DP35096

FIRST SCHEDULE

-----

NEW SOUTH WALES LAND AND HOUSING CORPORATION

SECOND SCHEDULE (1 NOTIFICATION)

-----

1 LAND EXCLUDES MINERALS (S.141 PUBLIC WORKS ACT, 1912)

NOTATIONS

-----

UNREGISTERED DEALINGS: NIL

\*\*\* END OF SEARCH \*\*\*



FOLIO: D/35096

-----

SEARCH DATE	TIME	EDITION NO	DATE
-----	----	-----	----
5/6/2024	9:57 AM	-	-

VOL 13432 FOL 119 IS THE CURRENT CERTIFICATE OF TITLE

LAND

----

LOT D IN DEPOSITED PLAN 35096

LOCAL GOVERNMENT AREA NEWCASTLE

PARISH OF HEXHAM COUNTY OF NORTHUMBERLAND

TITLE DIAGRAM DP35096

FIRST SCHEDULE

-----

NEW SOUTH WALES LAND AND HOUSING CORPORATION

SECOND SCHEDULE (1 NOTIFICATION)

-----

1 LAND EXCLUDES MINERALS (S.141 PUBLIC WORKS ACT, 1912)

NOTATIONS

-----

UNREGISTERED DEALINGS: NIL

\*\*\* END OF SEARCH \*\*\*